

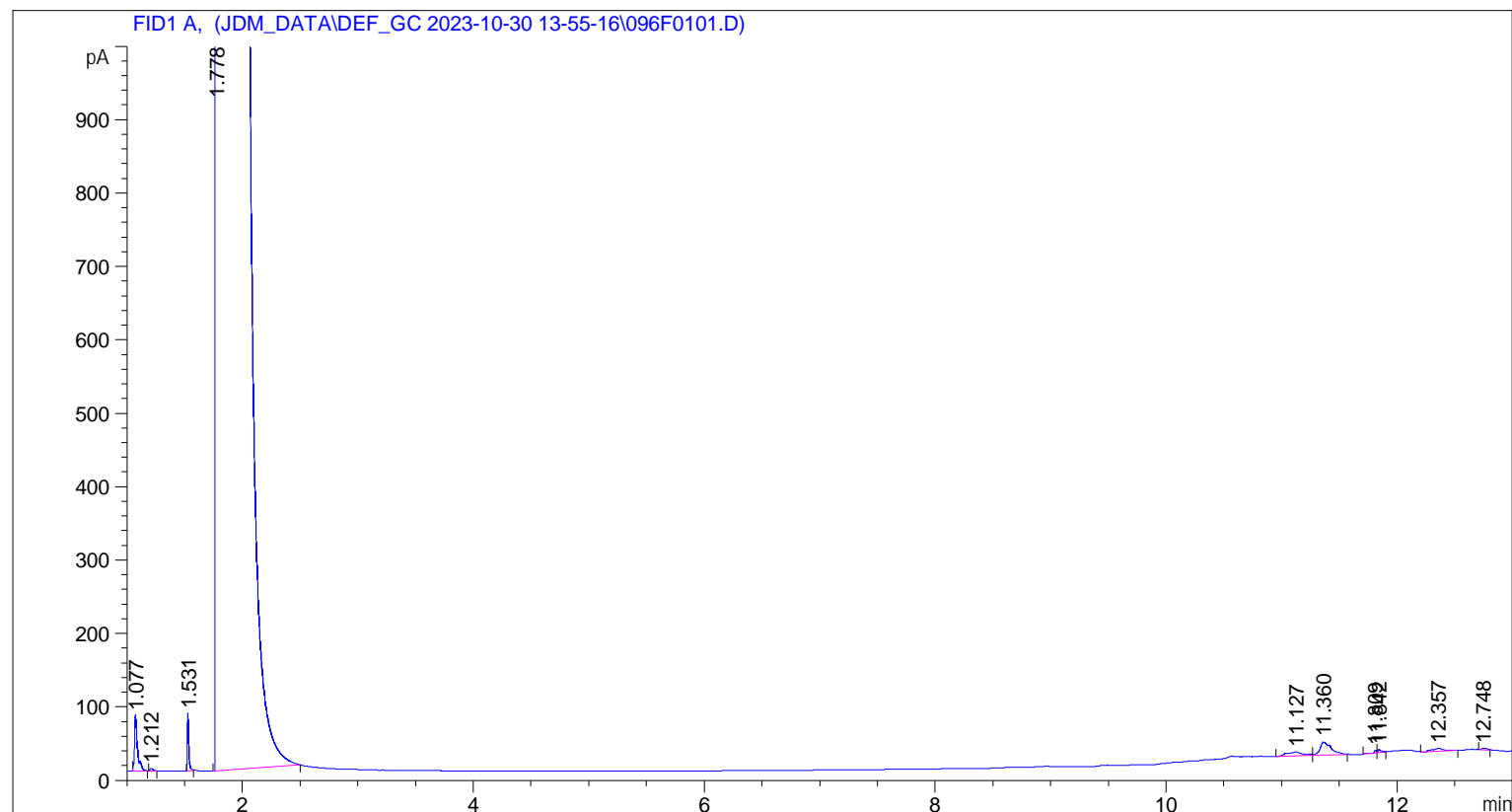
Sample Name: DCM4A

```

=====
Acq. Operator   :                               Seq. Line :    1
Acq. Instrument : HP 2                         Location  : Vial 96
Injection Date  : 30-Oct-23 1:59:31 PM          Inj       :    1
                                                Inj Volume: 1 µl

Acq. Method     : C:\CHEM32\2\DATA\JDM_DATA\DEF_GC 2023-10-30 13-55-16\FB_10.M
Last changed    : 30-Oct-23 1:55:17 PM
Analysis Method : C:\CHEM32\2\DATA\JDM_DATA\DEF_GC 2023-10-30 13-55-16\FB_10.M (Sequence
                  Method)
Last changed    : 31-Oct-23 9:17:10 AM
                  (modified after loading)
Method Info     : General2, medium ramp, 30 mins
=====

```



```

=====
                        Area Percent Report
=====

```

```

Sorted By      :      Retention Time
Multiplier    :      1.0000
Dilution      :      1.0000
Do not use Multiplier & Dilution Factor with ISTDs

```

Signal 1: FID1 A,

Peak #	RetTime [min]	Sig	Type	Area [pA*s]	Height [pA]	Area %
1	1.077	1	BB	136.03206	75.18637	0.03732
2	1.212	1	BB	7.07308	3.75976	0.00194
3	1.531	1	BB	69.18859	77.42333	0.01898
4	1.778	1	BB S	3.64065e5	4.35920e4	99.88192
5	11.127	1	BV	51.12153	5.35538	0.01403
6	11.360	1	VB	121.51070	17.59421	0.03334

Peak #	RetTime [min]	Sig	Type	Area [pA*s]	Height [pA]	Area %
7	11.809	1	BV	4.61725	3.82676	0.00127
8	11.842	1	VB	8.68209	3.95384	0.00238
9	12.357	1	BB	23.73267	3.58516	0.00651
10	12.748	1	BB	8.44667	2.48972	0.00232

Totals : 3.64495e5 4.37852e4

=====
*** End of Report ***